



DAYDREAM MULTI-FUNCTION SINGLE DOLL PRAM & STROLLER

Assembly Instructions. Adult Assembly Required.

Read all instructions before use.

**This manual is part of the product and
must be kept for future reference.**



Item may vary slightly from shown.

MODEL NUMBER*:

99001

VERSION CODE*:

1.0/0519/TG

** Model and Version numbers are needed
if replacement parts are requested*

Find us on  •  YouTube

FOR REPLACEMENT PARTS:

<http://www.badgerbasket.com/parts>

Badger Basket®, PO Box 227, Edgar, WI 54426-0227 USA • **Web:** www.badgerbasket.com
U.S. Based Customer Service Toll-Free (Mon-Thurs 7:00 AM-4:00 PM CST): 1-800-236-1310
Phone: 715-352-2311 • **Fax:** 715-352-3163



BEFORE YOU BEGIN ASSEMBLY:

Check all parts. If anything is missing or not satisfactory, please DO NOT call the store or return the product to them. Please go online to:
<http://www.badgerbasket.com/parts>

Most problems are resolved without you needing to leave home.

When emailing or calling us, please have this instruction manual, your product model number, and your Version Code ready.

Your Model Number is: 99001

Your Version Code is: 1.0/0519/TG

CARE INSTRUCTIONS:

Frame and attached fabrics can be spot and wiped clean with a damp cloth and mild soap and dry thoroughly. Removable fabric pieces can be hand washed in cold water and mild detergent and allow to air dry.



WARNING

ADULT ASSEMBLY REQUIRED. DUE TO THE PRESENCE OF SMALL PARTS AND SHARP POINTS DURING ASSEMBLY, KEEP OUT OF REACH OF CHILDREN UNTIL ASSEMBLY IS COMPLETE.



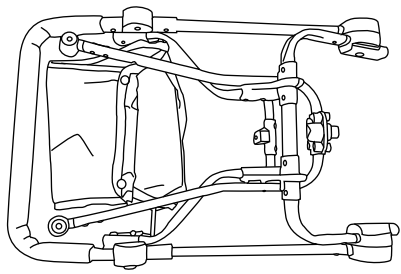
WARNING - CAUTION

READ ALL INSTRUCTIONS before use of this product. Use only the parts provided by Badger Basket®. Keep instructions for future use.

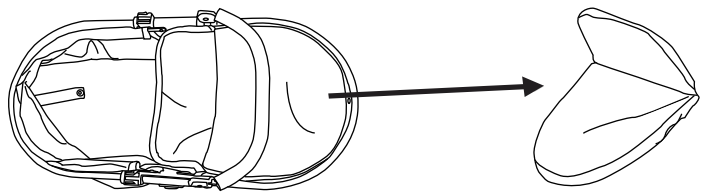
Do not use the product if it is damaged or broken. Periodically inspect the product to ensure all parts remain tight. **This item is a toy for dolls only. It is never to be used for real infants or pets. No product is a substitute for adult supervision. Always supervise your child during play.** For children ages three (3) years and older. Never sit on or stand on the toy. Stroller should be folded and unfolded by an adult only. Never use the doll stroller unless the frame locks are properly secured. Folded stroller should be stored out of reach of children.



ASSEMBLY TIP! Review the entire manual before beginning.

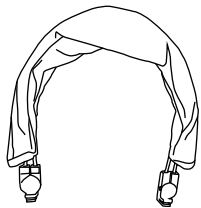


STROLLER FRAME
A

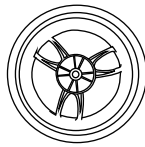


CARRIER
B1

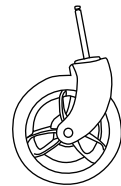
BOOT COVER
B2



CANOPY
C



LARGE WHEEL
D×2



SMALL WHEEL
E×2



AXLE
F



LARGE WHEEL
HUB CAP
G×2

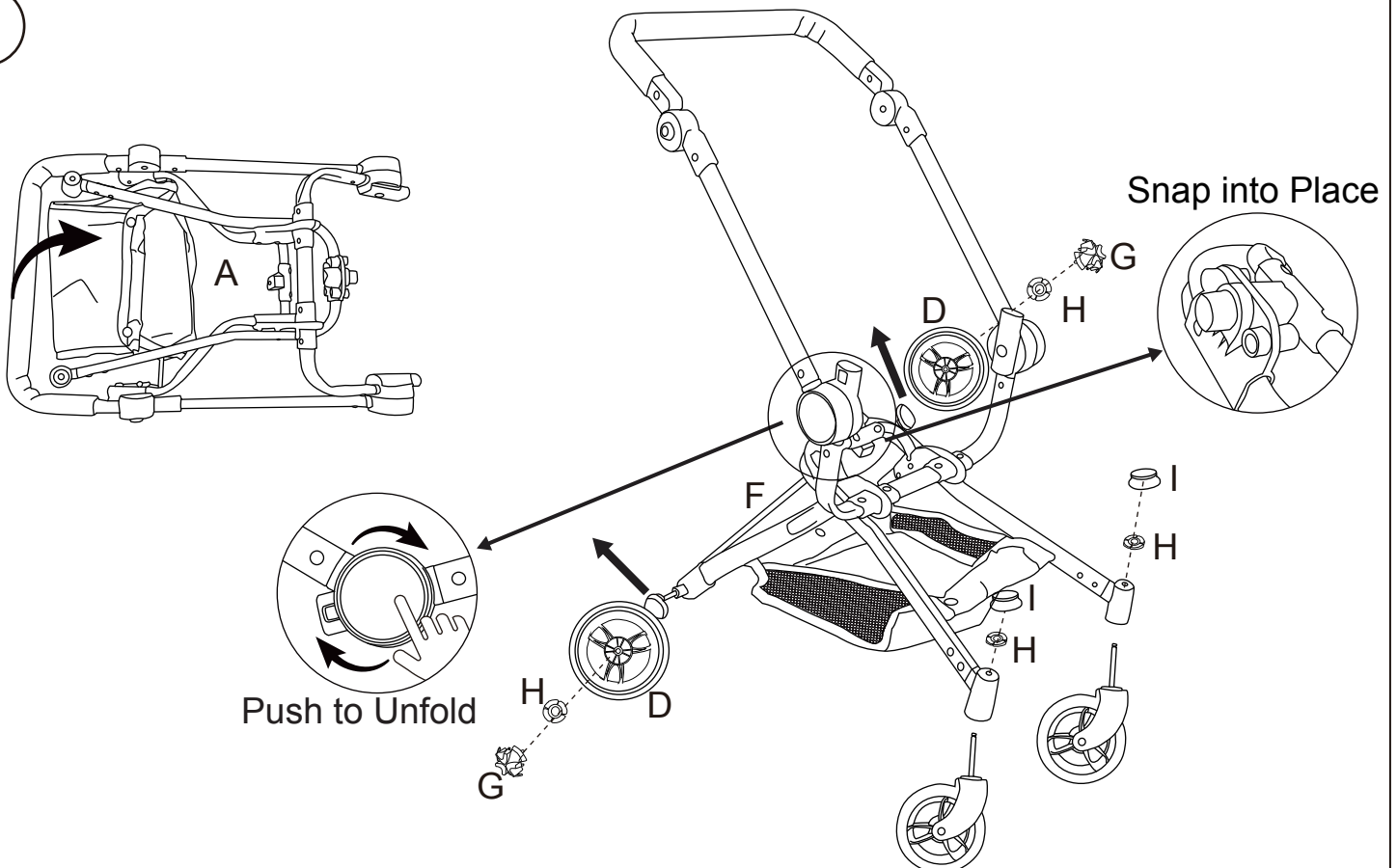


RETAINER CLIP
H×4

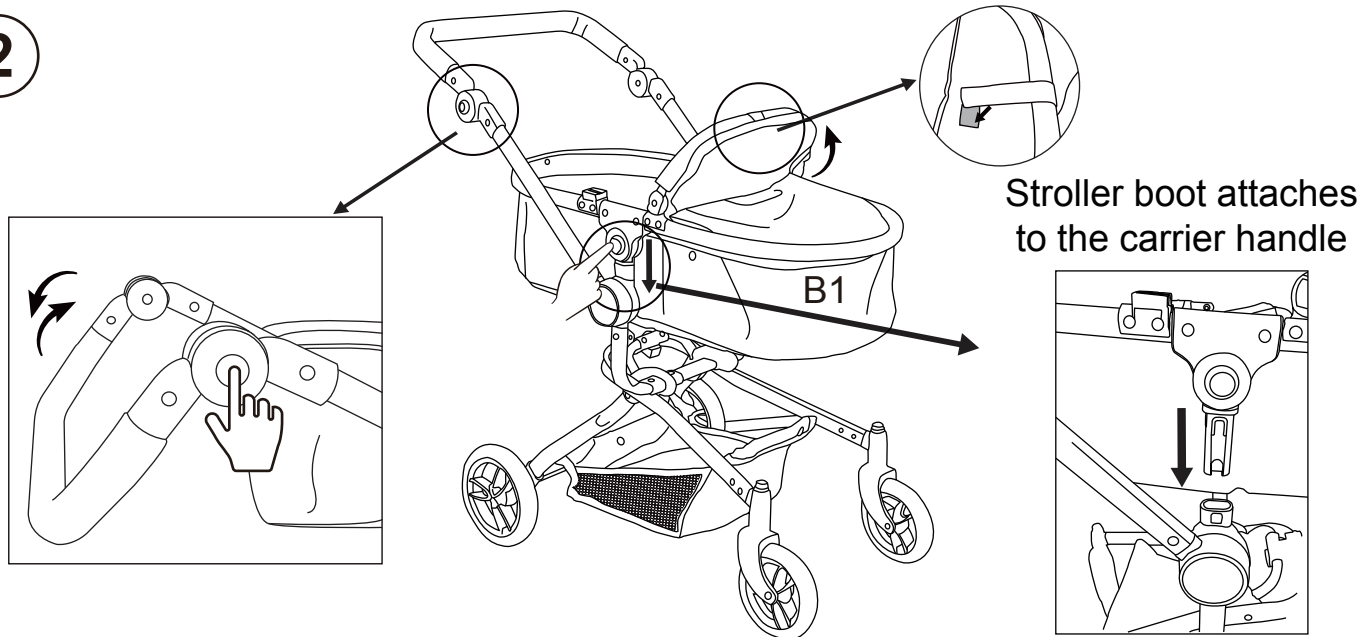


SMALL WHEEL
HUB CAP
I×2

1

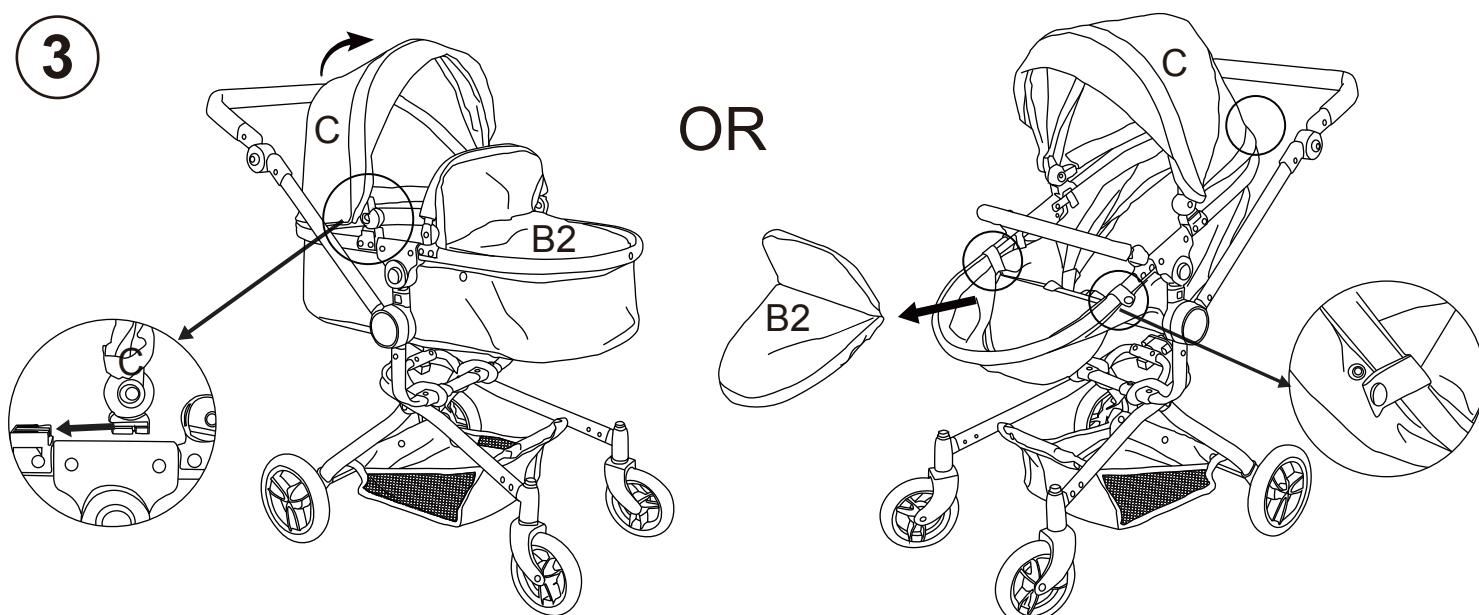


2



3

OR



4

The carrier must be removed to fold flat

